



INSPIRE to become reality

Daniele Rizzi, European Commission – Eurostat

daniele.rizzi@ec.europa.eu

eSDI-NETplus workshop:

*Lokale GDIs im europäischen Kontext
Eine nationale Perspektive*

Darmstadt, 12/2/2009



INSPIRE Directive

- INSPIRE lays down general rules to establish an infrastructure for spatial information in Europe
 - for the purposes of Community environmental policies
 - for policies or activities which may have an impact on the environment.
- INSPIRE is to be based on the infrastructures for spatial information established and operated by the Member States
 - INSPIRE is a *distributed infrastructure*.
- INSPIRE does not require the collection of new spatial data
- INSPIRE does not affect existing Intellectual Property Rights
- Entry into force 15 May 2007





Scope INSPIRE Directive

- Spatial data held by or on behalf of a public authority operating down to the lowest level of government when laws or regulations require their collection or dissemination
- 34 Spatial Data Themes laid down in 3 Annexes

INSPIRE main aim: data and service sharing



- Technical harmonization
- Organizational harmonization: removal of obstacles to access

Art. 17.2: The measures provided for in paragraph 1 [sharing of spatial data sets and services between public authorities] shall preclude any restrictions likely to create practical obstacles, occurring at the point of use, to the sharing of spatial data sets and services.



INSPIRE Spatial Data Scope



Annex I

1. Coordinate reference systems
2. Geographical grid systems
3. Geographical names
4. Administrative units
5. Addresses
6. Cadastral parcels
7. Transport networks
8. Hydrography
9. Protected sites

Annex II

1. Elevation
2. Land cover
3. Ortho-imagery
4. Geology

Harmonized spatial data specifications more stringent for Annex I and II than for Annex III



INSPIRE Thematic Scope



Annex III

- | | |
|--|---|
| 1. Statistical units | 11. Area management/restriction /regulation zones & reporting units |
| 2. Buildings | 12. Natural risk zones |
| 3. Soil | 13. Atmospheric conditions |
| 4. Land use | 14. Meteorological geographical features |
| 5. Human health and safety | 15. Oceanographic geographical features |
| 6. Utility and governmental services | 16. Sea regions |
| 7. Environmental monitoring facilities | 17. Bio-geographical regions |
| 8. Production and industrial facilities | 18. Habitats and biotopes |
| 9. Agricultural and aquaculture facilities | 19. Species distribution |
| 10. Population distribution – demography | 20. Energy Resources |
| | 21. Mineral resources |



INSPIRE Components

- Metadata
- Interoperability of spatial data sets and services
- Network services (discovery, view, download, invoke)
 - Made available through the European geo-portal
- Data and Service sharing (policy)
- Coordination and measures for Monitoring & Reporting

INSPIRE is a Framework Directive

•Main provisions in the Directive -> transposition into National legislation

•*Implementing Rules*, issued as Commission Regulations/Decisions, “designed to amend non essential elements of the Directive by supplementing it”, to be adopted by the Commission through the comitology procedure



From Commission proposal to Community Directive implementation

- **Preparatory phase (2004-2006)**
 - Co-decision procedure
 - Start of preparation of Implementing Rules
- **Transposition phase (2007-2009)**
 - **Directive enters into force: 15 May 2007**
 - INSPIRE Committee starts its activities: 26 June 2007
 - Continuation of preparation of Implementing Rules
 - **Transposition into national legislation: 15 May 2009**
 - Adoption of Implementing Rules by Comitology
 - **Commission Regulation (EC) No 1205/2008 of 3 December 2008 implementing Directive 2007/2/EC of the European Parliament and of the Council as regards metadata entered into force on 4 December 2008**
 - **Network Services View and Discovery voted by Committee on 19 December 2008**
 - **Monitoring and reporting voted by Committee on 19 December 2008**
- **Implementation phase (2009-2013)**
 - Implementation and monitoring of measures
 - Continuation of preparation of Implementing Rules
 - Adoption of Implementing Rules by comitology



Excerpt from Roadmap (adoption)



Milestone date	Article	Description
2007-05-15		Entry into force of INSPIRE Directive
2008-05-15	5§4	Submission for opinion of the INSPIRE committee of IR for the creation and updating of metadata
2008-11-15*	21(4)	Submission for opinion of the INSPIRE committee of IR for monitoring and reporting
2008-11-15*	16	Submission for opinion of the INSPIRE committee of IR for discovery and view services
2009-05-15*	17(8)	Submission for opinion of the INSPIRE committee of IR governing the access rights of use to spatial data sets and services for Community institutions and bodies
2009-05-15	9(a)	Submission for opinion of the INSPIRE committee of IRs for the interoperability and harmonisation of spatial data sets and services for Annex I spatial data themes
2009-05-15	24§1	Provisions of Directive are brought into force in MS
2009-10-15*	16	Submission for opinion of the INSPIRE committee of IR for download services
2009-10-15*	16(a)	Submission for opinion of the INSPIRE committee of IR for transformation service
2010-11-15*	16	Submission for opinion of the INSPIRE committee of IR for schema transformation and "invoke spatial data services" services
2012-05-15	9(b)	Submission for opinion of the IR s for the interoperability and harmonization of spatial data sets and services for Annex II and III

* = date proposed by Commission



The adoption of IRs: a top down process

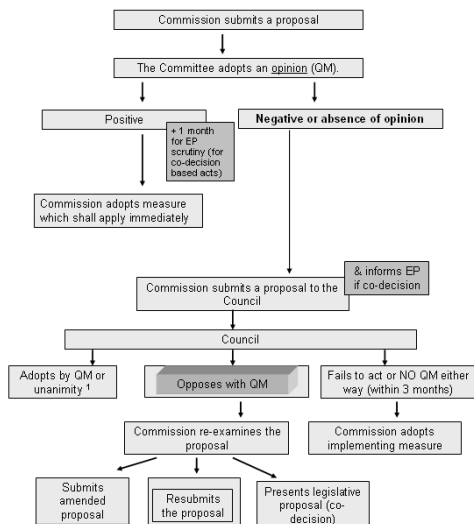


**Council Decision 1999/468/EC of 28 June 1999
amended by Decision 2006/512/EC
Article 5 and 5a**

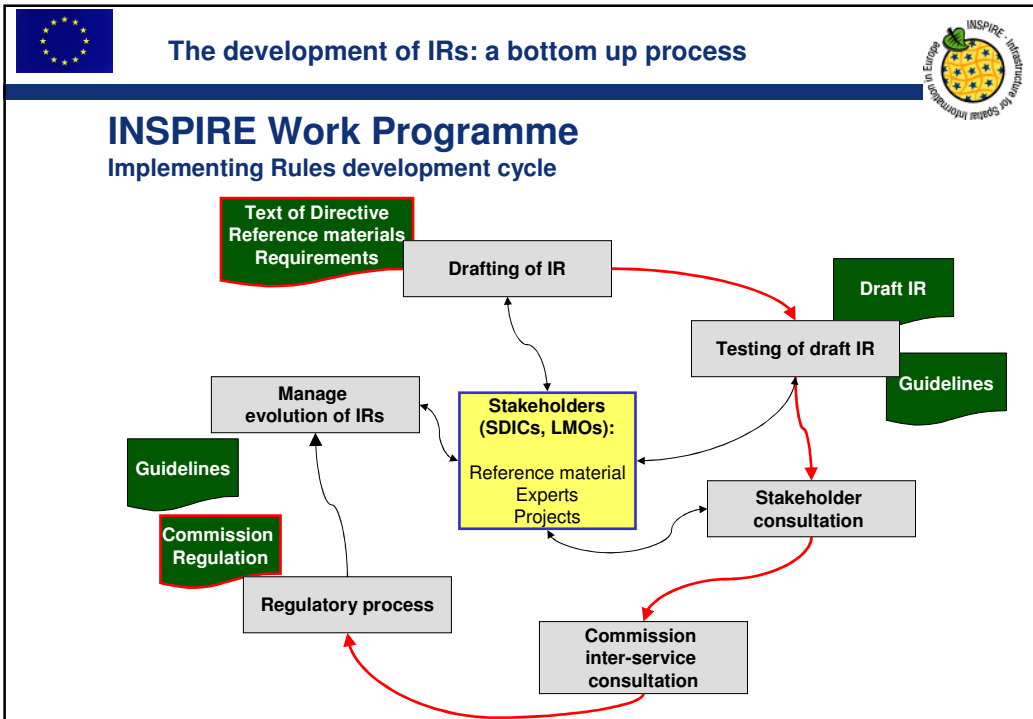
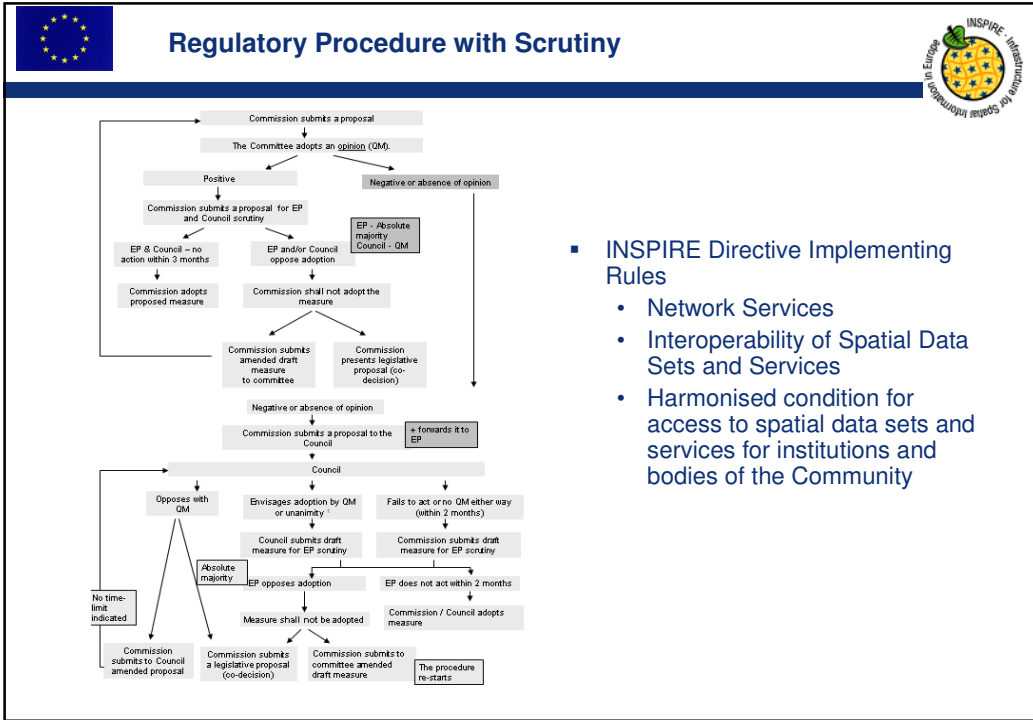
- **Regulatory procedure**
 - The Commission shall be assisted by a regulatory committee composed of the representatives of the Member States and chaired by the representative of the Commission
- **Regulatory procedure with scrutiny (5a)**
 - The Commission shall be assisted by a Regulatory Procedure with Scrutiny Committee composed of the representatives of the Member States and chaired by the representative of the Commission
- **The INSPIRE Committee has this dual role**



Regulatory Procedure without Scrutiny





- **INSPIRE Directive Implementing Rules**
 - Metadata
 - Monitoring and Reporting





	22-06-2005	01-06-2007	10-12-2008
Spatial Data Interest Communities (SDICs)	139	201 (+45%)	281 (+142%)
Legally Mandate Organisations (LMOs)	89	116 (+30%)	163 (+78%)
Proposed Experts	193	210 (+9%)	365 (+183%)
Referenced Materials	96	144 (+50%)	351 (+271%)
Identified Projects	94	112 (+19%)	121 (+29%)
Proposals testing Annex I data specifications			78



Stepwise Approach: the example of Data Specifications IRs

1. Development of conceptual framework and specification methodology (by Data Specification Drafting Team)
 - DS-D 2.3 Definition of Annex Themes and Scope
 - DS-D 2.5 *Generic Conceptual Model* (GCM),
 - DS-D 2.6 *Methodology for Specification Development*.
 - DS-D 2.7 Guidelines for Encoding
2. Development of data specifications for each spatial data theme (by different Thematic Working Groups) based on the
 - conceptual framework
 - common specification development methodology,
 - and on the INSPIRE roadmap
3. Preparation of the Implementing Rules based on data specifications (by the Commission)



Current status

- Drafting Team Data Specifications has completed the framework documents
- 8 Thematic Working Groups (TWGs) have prepared draft specifications for Annex I Data Themes
- Testing of draft specifications and consultation on draft structure and contents of Implementing Rules Annex I started on 19 Dec 2008 (**consultation open until 20 Feb 2009**)
- Preparation of final draft IR
 - Open and transparent process requires that comments that are received are taken into account
 - Depending on number of comments, first IR on Annex I Data Themes to be tabled for the INSPIRE Committee meeting in May 2009
- Annex II and III themes to be addressed in 2009



Implementing Rules (IRs)

- Implementing Rules (legal text) are derived from INSPIRE data specifications
- INSPIRE data specifications will become guideline documents



Next steps

- INSPIRE Annex II and III data themes
 - Lessons learned from Annex I
 - Open and transparent stakeholder involvement paramount for success of INSPIRE
 - Evaluate approach to collection of user requirements and use cases
 - Lower threshold for submission of candidate specifications
 - Use of resources, realistic timing
 - Process described in INSPIRE work programme will be adjusted to take into account lessons learned and policy priorities
 - Timing of process Annex II and III depends on outcome of lessons learned
 - With stakeholder involvement anticipated to start in early 2009



- Highest involvement of key stakeholders through the Spatial Data Interest Community (SDIC) and Legally Mandated Organisations (LMO) concepts
- Are you involved in a network representing producers, transformers and users of spatial data that falls within the scope of INSPIRE?
 - Register as a Spatial Data Interest Community!
- Has your organisation a legal mandate for one or more aspects of INSPIRE?
 - Register as a Legally Mandated Organisation!

SDICs and LMOs possible roles

- Be kept informed
- Review deliverables from the Drafting Teams and the Thematic Working Groups
- Propose experts
- Submit reference material
- Test draft specifications

<http://www.ec-gis.org/inspire>



Communication channels

INSPIRE Conference 2009

- Third INSPIRE Conference will take place in Rotterdam, the Netherlands, 15-19 June 2009
- In conjunction with the Eleventh International Conference of the GSDI Association and the National conference on Dutch SDI
- Conference theme: Building SDI Bridges to Address Global Challenges
- http://www.ec-gis.org/inspire/events/conferences/inspire_2009



INSPIRE Forum:

Towards improved communication with and between stakeholders

- An INSPIRE Forum will integrate and complement existing structures by bringing them together with multiple societal stakeholders.
- It will serve to share experiences and best practices while fostering the coordination of stakeholder actions.
- The Forum is a mechanism through which the INSPIRE community can cooperate, share a common vision and organise themselves to collectively and individually contribute towards the shared vision: **implement INSPIRE in a successful way.**

The INSPIRE Forum will be realised through the following means:

- the series of INSPIRE Conferences;
- support to National or thematic workshops related to the subject areas of the INSPIRE Directive;
- electronic communication tools, including a Web 2.0 INSPIRE Forum site, discussion forums and RSS newsfeeds.



Current websites

- INSPIRE Website
 - <http://www.ec-gis.org/inspire>
 - For public and stakeholders
- INSPIRE intranet site
 - <http://circa.europa.eu/Members/irc/jrc/imaco2000/home>
 - *For members of Drafting Teams and Thematic Working Groups*
- Prototype INSPIRE geo-portal
 - <http://www.inspire-geoportal.eu/>
 - Includes an INSPIRE and ISO compliant on-line metadata editor
- INSPIRE registry
 - <https://inspire-registry.jrc.ec.europa.eu/>
 - INSPIRE Glossary and Feature Concept Dictionary registers in support of data specifications development