

eSDI-Net+

*European Network on Geographic Information
Enrichment and Reuse*

Workshop Darmstadt

February 12, 2009

Dr. Joachim Rix
Coordinator eSDI-Net+
INI-GraphicsNet Stiftung
Rundeturmstr. 10
64283 Darmstadt

Tel.: +49 (6151) 155-128
Fax.: +49 (6151) 155-599
Email: joachim.rix@ingraphics.net
<http://www.ingraphics.net>



eSDI-Net+

*Network for promotion of cross border dialogue
and exchange of best practices on Spatial Data
Infrastructures (SDI's) throughout Europe*

**Establishment of a Thematic Network
funded within the eContentplus programme
of the European Commission
ECP-2006-GEO-320005**



Why eSDI-Net+?

Obstacles SDI's have to face:

1. Technological Barriers
(Lack of Reusability and Clustered Data)
2. Organisational Barriers
(Fragmentation and Lack of Harmonisation and Interoperability)
3. Legal Barriers
4. Cultural and Linguistic Barriers

Analysis of demand

- **Public sector organisations:** need to define clear data exchange policies to disseminate their information
- **European Bodies:** need for the enforcement and validation of standards in Member States
- **European GI Agencies:** need for standardised solutions in order to create a shared base cartography
- **Technological enterprises:** need to increase their knowledge in GI standardisation
- **GI Research Community:** need for better defined specifications in order to collaborate in Pan-European research and training projects
- **Consumers:** simple search, access and viewing of geographical data in standard formats

Objectives of eSDI-Net+

- To establish a Thematic Network as **platform for communication** and exchange among stakeholders involved in the creation and use of SDI's
- To **bring together potential SDI stakeholders** in order to increase awareness and to facilitate the creation of
 - **guidelines**
 - **standards**
 - **best practices**
- To establish **communication mechanisms between European and local levels** to maximize benefits of INSPIRE, GMES, GALILEO and e-government programmes
- To develop solutions for **multicultural and multilingual** access, exploitation, use, and reuse of digital GI content in Europe

Thematic Network – Initial Partners

Geographic coverage

Organisations from 15 European countries
from the different regions in Europe

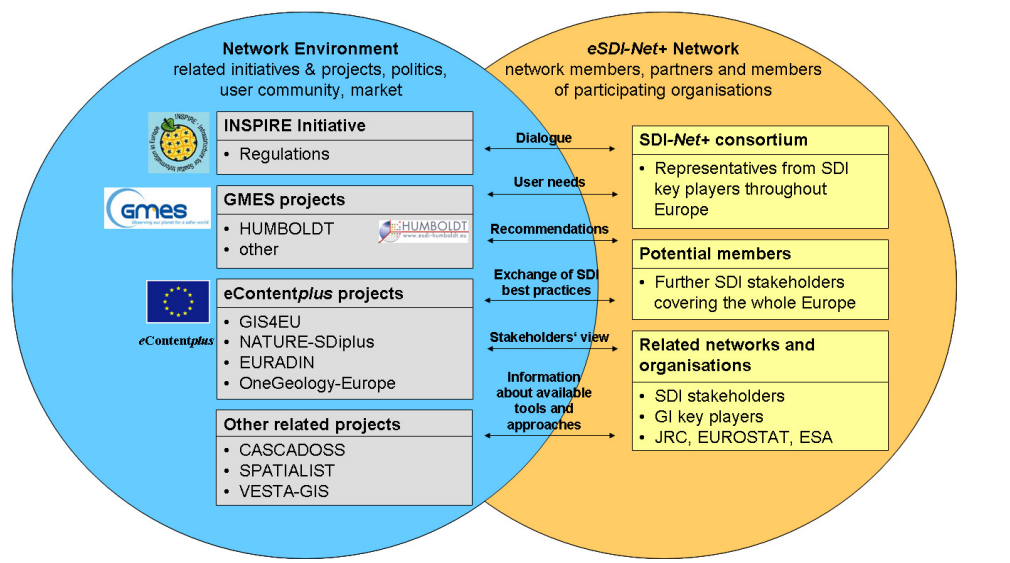
Involvement of Stakeholders

- Providers of digital geographical data (local, national and regional public authorities, private organisations and institutions)
- Users of digital geographical data (research institutes, universities, software manufacturers)
- National and international GI umbrella Associations
- Consultancy and Network Management

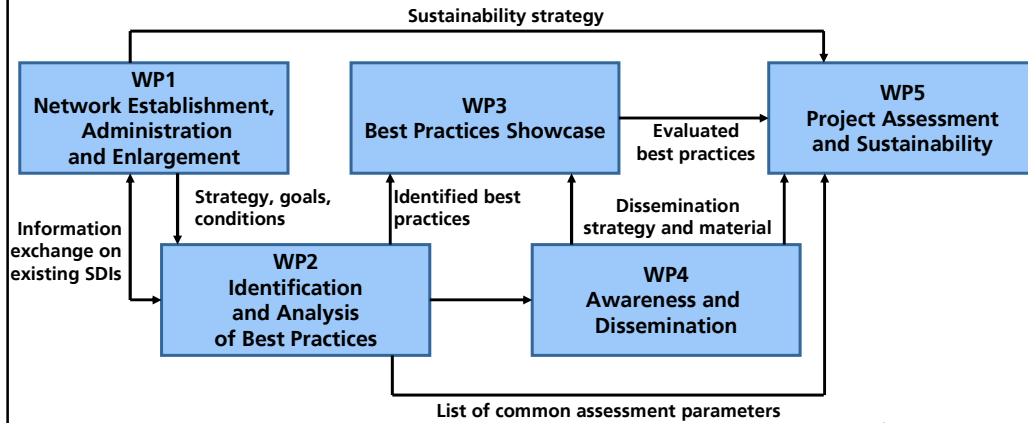
1. **The Foundation "INI-GraphicsNet Stiftung"**, Germany (IGS)
2. **AGH University**, Poland (AGH)
3. **AM/FM GIS Italia**, Italy (AMFM)
4. **Association for Geospatial Information in South-East Europe**, Bulgaria (AGISEE)
5. **Association of Geographic Information Laboratories for Europe**, Netherlands (AGILE)
6. **Association USIG** (Users of Geographic Information), Portugal (USIG)
7. **CNR-IMATI**, Italy
8. **EUROGI**, Netherlands
9. **Fraunhofer Gesellschaft**, Germany (FHG-IGD und FOKUS)
10. **GISIG**, Italy
11. **Hungarian Association for Geo-information** (HUNAGI)
12. **Research Institute for Artificial Intelligence**, Romania (ICIA)
13. **Intergraph**, Czech Republic (INGR)
14. **Kuovola Region Federation of Municipalities**, Finland (KRF)
15. **Linköpings Universitet**, Dept. of Computer and Information Science, Sweden (LIU-IDA)
16. **Regione Piemonte**, Italy (PIEMONTE)
17. **Katholieke Universiteit Leuven**, Belgium (K.U.Leuven R&D)
18. **The South East European Research Centre**, Greece (SEERC)
19. **The University "Jaume I" (King James I)**, Spain (UJI)
20. **University of Rome "La Sapienza"**, Italy (URS)



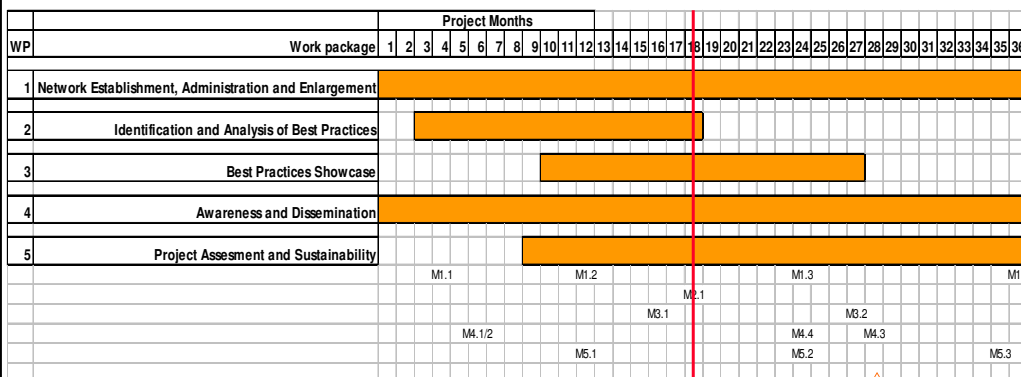
Related initiatives and projects – current status of collaboration



Interdependencies between work packages



Timeline and Milestones – Current Status



Goals of the regional activities

- Objective:
 - Identify and document relevant existing local, regional and national SDI initiatives
 - Determine common problems and good practice solutions
 - Focus on Sub-national SDI
- Outcomes:
 - Evaluate and document possible integration of good practices
 - Identify best practice solutions on existing SDI
- Target:
 - INSPIRE, GMES and GALILEO; e-communities, e-government clusters and stakeholders

The process: Identification and Analysis

- Identification of SDI
 - Focus on Sub-national: Regional, sub-regions and municipalities (local)
 - Also national, thematic, cross border, private, ...
 - Contact points organised on a national basis: Consortium, EUROGI, others
 - Public announcement and On-line registration
 - Ad-hoc research: web, conferences, individual contacts,...
- Analysis of SDI
 - Methodology
 - Framework for the evaluation of SDI - Common parameters and criteria
 - Questionnaire - adjusted to local needs: Language, organisational framework and other
 - Selection of SDI cases for further analysis
 - Interviews with officials in charge of/involvement with selected SDI
 - Workshops to present cases, discussion and final recommendations from each set of cases

Program

- Initial Workshop – methodology
- Application oriented workshops
- Technical outcomes – summarise & discuss results to:
 - **Identify common issues, standard solutions and their effectiveness**
 - **Characterise the state of the art and usability**
 - **Analyse the socio economic impact of SDIs**
- Integration aspects - Set the framework for integration between:
 - **SDI and the e-government policies and solutions**
 - **SDI and the e-communities activation and functioning**

Key Aspects of SDIs being Assessed

- Usage
- Networking
- Socio-economic impact
- Organisational assessment
- Coping with legal aspects
- Technical functionalities and facilities
- INSPIRE compatibility
- eGovernment relations

SDI Definition

Most definitions of SDIs are rather general

For example:

‘the technology, policies, standards, human resources, and related activities necessary to acquire, process, distribute, use, maintain, and preserve spatial data’

(US OMB 2002)



Regional and national SDI workshops

SDI Selection Timeline	2008							2009							
	May	Jun	Jul	Aug	Sep	Oct	Nov	Dec	Jan	Feb	Mar	Apr	May	Jun	Jul
Southeast Europe															
UK/Ireland															
Portugal/Spain															
Hungary															
CZ/Slovakia															
Italy															
Germany															
Netherlands/Belgium															
France															
Scandinavia															
Poland															

- Identification and Preparation
- Questionnaires and Interviews
- Assessment and Selection
- Workshop
- Report
- Recommendation of Best Practices for the Award



Countries covered and Workshops organised

France	Strasbourg, FR	June 5-6, 2008	38
Hungary	Budapest, HU	August 29, 2008	6
Czech Rep., Slovakia	Brno, CZ	September 10, 2008	15
Italy	Rome, IT	September 25, 2008	35
Romania	Bukarest	December 12, 2008	20
Poland	Krakow, PL	January 29, 2009	19
Portugal, Spain	Lisbon, PT	February 5, 2009	20
South East Europe (11 countries)	Thessaloniki, GR	February 5-6, 2009	
United Kingdom, Ireland	Liverpool, UK	February 11, 2009	11

Countries being covered and Workshops planned

Germany	Darmstadt, DE	February 12-13, 2009
Netherlands	NL	Early April
Belgium	BE	April 28, 2009
Scandinavia (4 countries)		To be defined

Current: 22countries; 9 workshops; more than 160 cases identified
Planned: 28 countries in 12 workshops

Local or Disciplinary Differences

- Understanding of SDI:
 - discussions & documents were initiated/created
 - conclusions will be taken from the results of these activities
- Status of knowledge:
 - very different across potential participants
 - harmonization process through close collaboration and information exchange
- Selection criteria for best practices:
 - identification criteria for SDI as basis for the regional WSs
 - Recommendations from the national experiences
 - assessment document for the best practice award in progress

Workshop Assessment Concept

Assessment Goal	Stakeholder	Methodology
Workshop	Organizer	WS Summary Questionnaire, on-line
	Participant	WS Participant Questionnaire, off/on-line

Experiences & Results

- Subsidiarity, communication and cooperation among administrative levels
 - Key features that differentiate a SDI from a complex corporate or Web GIS and Geoportals
 - Main drawbacks in sub-national SDI implementation
 - Management of the relationship between sub-national SDI and national SDI
 - Producing topographic databases
 - Building a shared data model for structural urban planning
 - Data sharing, dealing with IPR and managing geospatial data licensing issues
- Highlights from data collected
 - Mature SDI are difficult to find and analysis by components prove to be more effective
 - Majority of SDI operate informally, but the establishment of legal structures is increasing
 - Very heterogeneous funding, often including public National and European
 - Need for coordination committees mainly from the national level
 - Taylored for internal users requiring data policies for external access and value adding
 - Growing awareness for INSPIRE, but lack of understanding of its technological implications
 - Requirement for metadata availability at free of charge and to adopt relevant standards
- Findings from other countries will enrich and facilitate structured conclusions

Aspirations for our workshop

Informative

- We all learn lessons from others, gain insights

Stimulating

- Creative juices get going

Networks

- Establish new contacts and strengthen existing ones

Constructive comments & evaluations

- Probing, constructive comments

Reporting

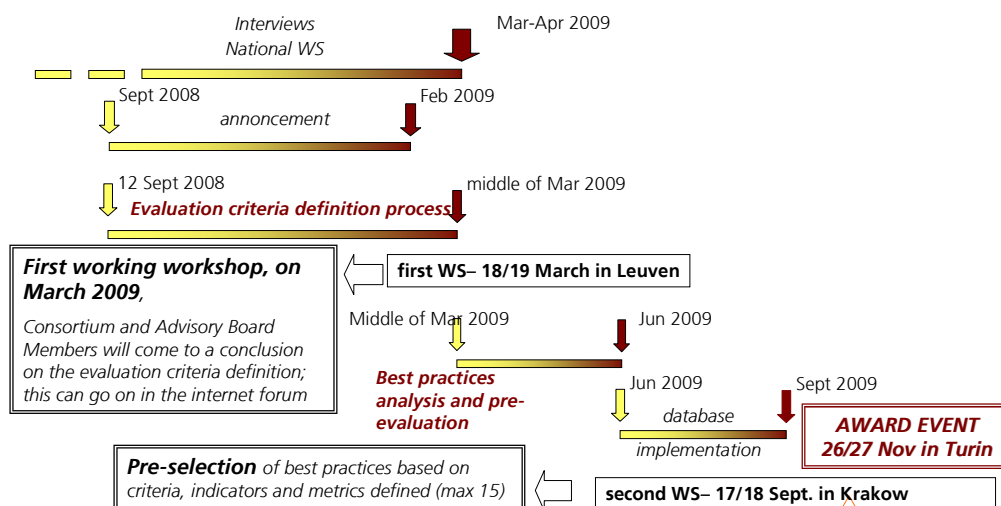
- Sound basis for report to eSDI-Net+ project

Award winners

- Hopefully identify potential award winners



Best Practice Award Planning



Program proposal:

Open Conference **Date:** 26/27 November 2009 **Place:** Turin

Thursday

Presentation of the project

SDI analysis results

Showcase of pre-selected projects (10 cases)

Selection of the "top-scoring" Best Practises
(restricted to the Award Jury)

key notes speaker

Gala dinner

Friday

Award celebration

Key notes speaker

(recommended: Prof. Abbas Rajabifard, University of Melbourne)

Illustration of selection criteria by the Award Jury

Awarding of the "top-scored" Best Practises

Objectives on dissemination

- Create information and awareness for most of the European public authorities, users and stakeholders on benefits of using semantically enriched GI
- Widely distribution of knowledge of existing geographic enriched digital information best practices, with a focus on European, National and Regional level
- Network enlargement

eSDI-NET+ target audience and dissemination strategies:

- Members of GI committees: to present eSDI-Net+ and the national workshops, also proposing adhesion to the eSDI-Net+ network
- References of regional and local SDIs: all eSDI-Net+ partners should contribute to tune the action to the national realities
- Representatives of user categories: as above, with active participation to the discussion of SDI services, as they are customers of SDI
- References/involved in national e-gov activities: to share their experience and thus enriching the debate

INSPIRE – GSDI 11 Conference, Rotterdam (NL), 15-19 June 2009 Two subsequent Workshops, proposed by eSDI-Net+

“Lessons learnt and best practices from GI-SDI projects” examples of eContentPlus projects

Part I: The eContent+ Programme and the eSDI-NET+ Network

- The eContent+ programme
- eSDI-Net+, a network perspective
- eSDI-Net+: Methodology, Evaluation framework, Best practices, Award 2009

Part II: Examples of the eContentPlus projects:

- GIS4EU - Provision of interoperable data sets to open GI to EU Communities
- EURADIN - European Addresses Infrastructure
- NATURE-SDIplus -Best Practice Network for SDI in Nature Conservation
- OneGeology Europe – Best Practice Network for SDI in Geology

Establishment of sustainable network

- Extension of the consortium
- Building the network
- Identification of persons and organizations interested in collaboration
- Organizational body for sustainable network and decision on legal entity

Thank you

for your interest in the project

eSDI-Net+

Get involved at www.esdinetplus.eu

eContent

The website
www.esdinetplus.eu



The screenshot shows the website in a Microsoft Internet Explorer browser window. The address bar displays "http://www.esdinetplus.eu/". The browser's menu bar includes "File", "Modifica", "Visualizza", "Preferiti", "Strumenti", and "?". The toolbar contains various icons for search, RSS, mail, and other functions. The website content includes a navigation menu with "eSDI-NET+", "News", "Events", "Publications", "Get Involved", and "Contact". A main heading reads "eSDI-NET+ Network for promotion of cross border dialogue and exchange of best practices on Spatial Data Infrastructures (SDI's) throughout Europe". Below this are three highlighted sections: "WHY SDI", "RESOURCES ON SDI ASSESMENT", and "Identification and Analysis of SDI Best Practices - Join now!". A footer note states: "This Website is part of the eSDI-NET+ project, co-funded by the Community programme eContentplus". The Windows taskbar at the bottom shows the Start button, several open applications, and the system clock displaying 10:07.