

## eSDI-Net+

*European Network on Geographic Information  
Enrichment and Reuse*

---

## European SDI Best Practice Awards 2009

Turin, Italy

November 26-27, 2009

# Message of Support

from

**Frieda Brepoels**

**Flemish Member of the European Parliament**

## eSDI-Net+

### *European Network on Geographic Information Enrichment and Reuse*

---

European SDI Best Practice Awards 2009

## eSDI-Net+ Network for Cross Border Dialogue

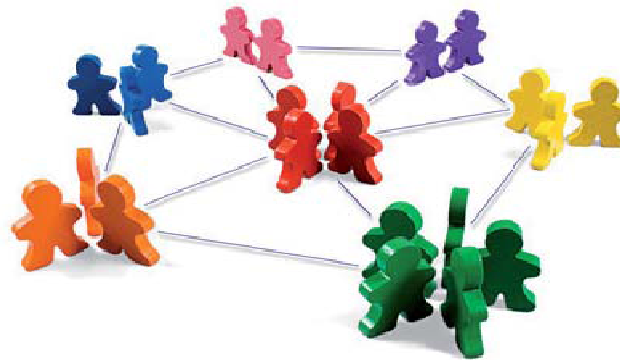
Coordinator  
Dr. Joachim Rix  
Technische Universität Darmstadt  
Fraunhoferstr. 5  
64283 Darmstadt

Tel.: +49 (6151) 155-221  
Fax.: +49 (6151) 155-444  
Email: [joachim.rix@gris.tu-darmstadt.de](mailto:joachim.rix@gris.tu-darmstadt.de)  
<http://www.esdinetplus.eu>

November 26-27, 2009

## eSDI-Net+

*Network for promotion of cross border dialogue and exchange of best practices on Spatial Data Infrastructures (SDI's) throughout Europe*



Establishment of a Thematic Network funded within the eContentplus programme of the European Commission  
ECP-2006-GEO-320005

## Why eSDI-Net+?

Obstacles SDI's have to face:

1. Technological Barriers  
(Lack of Reusability and Clustered Data)
2. Organisational Barriers  
(Fragmentation and Lack of Harmonisation and Interoperability)
3. Legal Barriers
4. Cultural and Linguistic Barriers

## Analysis of demand

- **Public sector organisations:** need to define clear data exchange policies to disseminate their information
- **European Bodies:** need for the enforcement and validation of standards in Member States
- **European GI Agencies:** need for standardised solutions in order to create a shared base cartography
- **Technological enterprises:** need to increase their knowledge in GI standardisation
- **GI Research Community:** need for better defined specifications in order to collaborate in Pan-European research and training projects
- **Consumers:** simple search, access and viewing of geographical data in standard formats

## Objectives of eSDI-Net+

- To establish a Thematic Network as **platform for communication** and exchange among stakeholders involved in the creation and use of SDI's
- To **bring together potential SDI stakeholders** in order to increase awareness and to facilitate the creation of
  - **guidelines**
  - **standards**
  - **best practices**
- To establish **communication mechanisms between European and local levels** to maximize benefits of INSPIRE, GMES, GALILEO and e-government programmes
- To develop solutions for **multicultural and multilingual** access, exploitation, use, and reuse of digital GI content in Europe

## Thematic Network – Initial Partners

### ***Geographic coverage***

Organisations from 15 European countries from the different regions in Europe

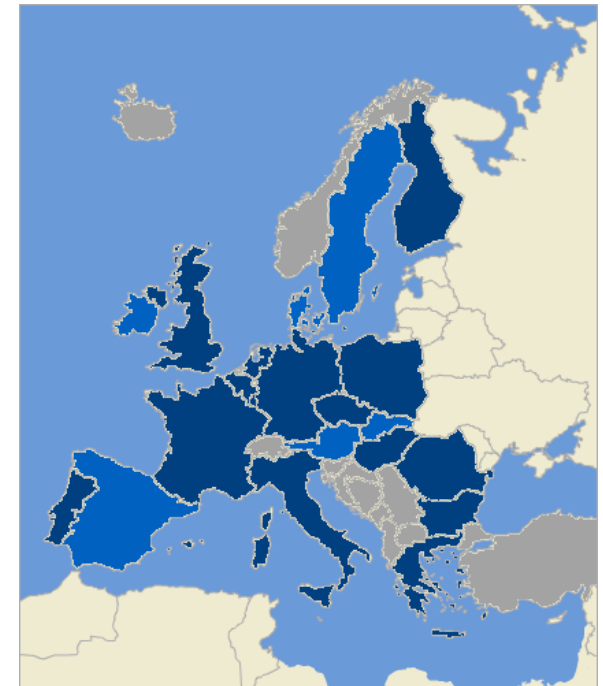
### ***Involvement of Stakeholders***

- Providers of digital geographical data (local, national and regional public authorities, private organisations and institutions)
- Users of digital geographical data (research institutes, universities, software manufacturers)
- National and international GI umbrella Associations
- Consultancy and Network Management

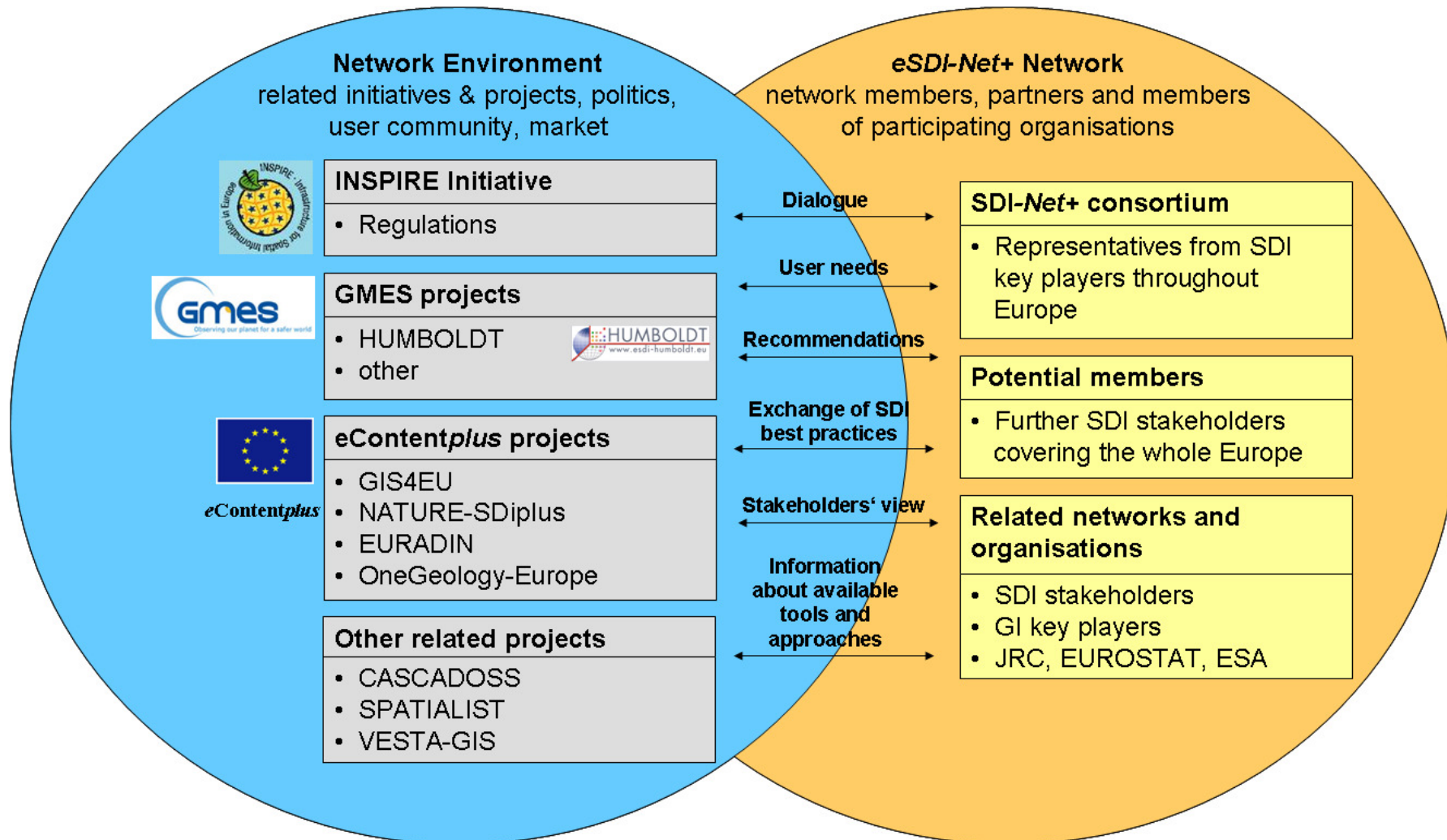


## Consortium Members

1. **Technische Universität Darmstadt**, Germany (TUD)
2. **AGH University**, Poland (AGH)
3. **AM/FM GIS Italia**, Italy (AMFM)
4. **Association for Geospatial Information in South-East Europe**, Bulgaria (AGISEE)
5. **Association of Geographic Information Laboratories for Europe**, Netherlands (AGILE)
6. **Association USIG** (Users of Geographic Information), Portugal (USIG)
7. **CNR-IMATI**, Italy
8. **EUROGI**, Netherlands
9. **Fraunhofer Gesellschaft**, Germany (FHG-IGD und FOKUS)
10. **GISIG**, Italy
11. **Hungarian Association for Geo-information** (HUNAGI)
12. **Research Institute for Artificial Intelligence**, Romania (ICIA)
13. **Intergraph**, Czech Republic (INGR)
14. **Kuovola Region Federation of Municipalities**, Finland (KRF)
15. **Linköpings Universitet**, Department of Computer and Information Science, Sweden (LIU-IDA)
16. **Regione Piemonte**, Italy (PIEMONTE)
17. **Katholieke Universiteit Leuven**, Belgium (K.U.Leuven R&D)
18. **The South East European Research Centre**, Greece (SEERC)
19. **The University "Jaume I" (King James I)**, Spain (UJI)
20. **University of Rome "La Sapienza"**, Italy (URS)



# Related initiatives and projects – current status of collaboration



## Aspects relating to standards, dissemination of information and exploitation of the results

### 1. INSPIRE

- JRC + EuroGeographics at the Advisory Board
- Partners are represented in INSPIRE committees
- Related projects in the INSPIRE context
- Workshop and GSDI Conference

### 2. OGC: bilateral meetings took place

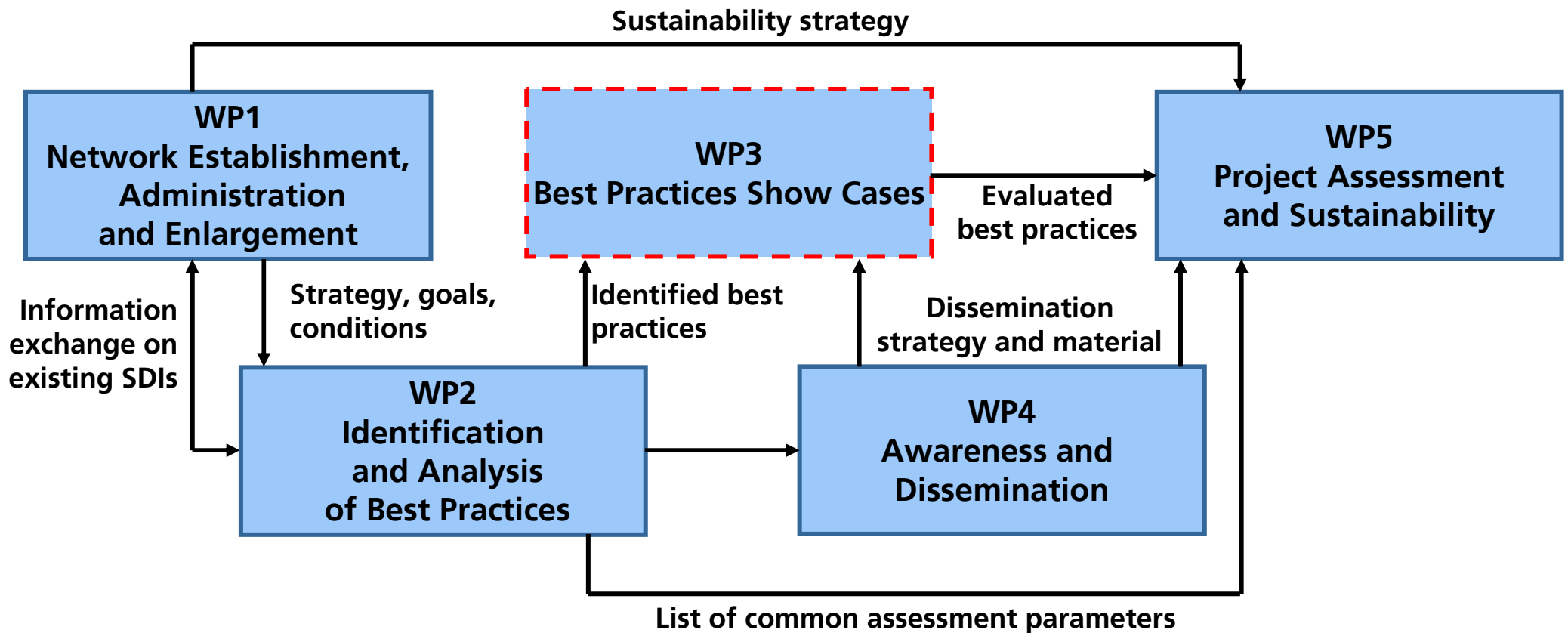
### 3. GALILEO and ESA: establishment of contact

### 4. Industry: INGR partner; ESRI in Advisory Board; participate in project events and workshops

### 5. Dissemination & Awareness building

### 6. Network Sustainability

# Work packages



## Goals of the regional activities

- **Objective:**
  - Identify and document relevant existing local, regional and national SDI initiatives
  - Determine common problems and good practice solutions
  - Focus on Sub-national SDI
- **Outcomes:**
  - Evaluate and document possible integration of good practices
  - Identify best practice solutions on existing SDI
- **Target:**
  - INSPIRE, GMES and GALILEO; e-communities, e-government clusters and stakeholders

# Regional and national SDI workshops

SDI Selection Timeline	2008								2009						
	May	Jun	Jul	Aug	Sep	Oct	Nov	Dec	Jan	Feb	Mar	Apr	May	Jun	Jul
Southeast Europe						Green	Orange	Orange	Orange	Blue	Yellow	Purple	Purple	Cyan	
UK/Ireland						Green	Green	Orange	Blue	Yellow	Purple	Cyan			
Portugal/Spain					Green	Green	Orange	Orange	Blue	Yellow	Purple	Cyan			
Hungary	Green	Orange	Orange	Blue	Yellow	Purple	Purple	Cyan	Cyan						
CZ/Slovakia	Green	Orange	Orange	Orange	Blue	Yellow	Purple	Purple	Cyan	Cyan					
Italy	Green	Orange	Orange	Blue	Yellow		Purple	Cyan							
Germany	Green	Green	Green	Green	Orange	Orange	Orange	Orange	Orange	Blue	Yellow	Purple	Cyan		
Netherlands/Belgium						Green	Green	Orange	Blue	Orange	Blue	Blue	Yellow	Purple	Cyan
France	Green	Orange	Blue	Yellow	Orange	Orange	Orange	Orange	Orange	Purple	Cyan				Yellow
Scandinavia					Green	Green	Orange	Orange	Orange	Blue	Blue	Blue	Yellow	Purple	Purple
Poland					Green	Green	Orange	Orange	Orange	Blue	Yellow	Purple	Cyan		

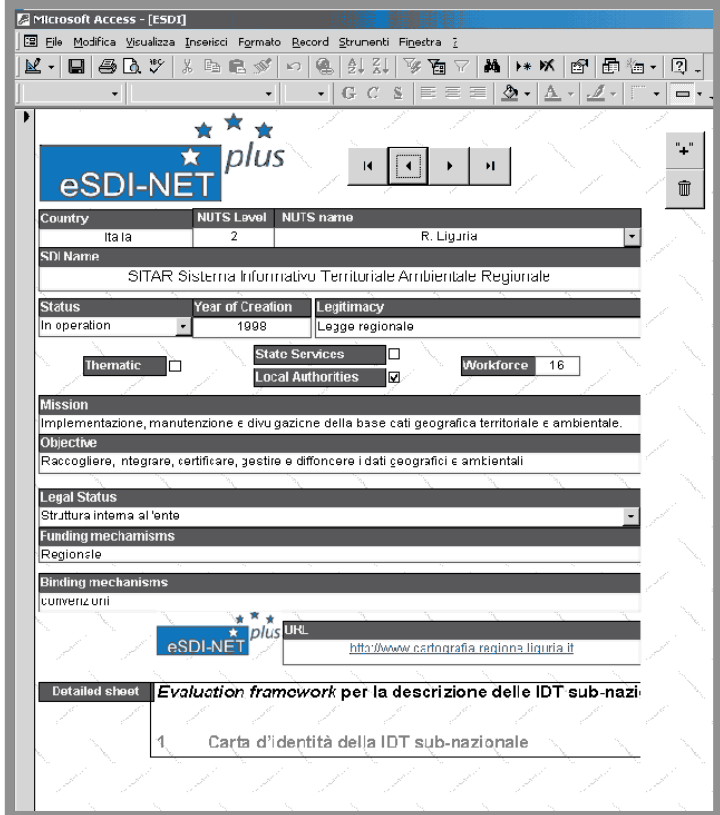
- Identification and Preparation
- Questionnaires and Interviews
- Assessment and Selection
- Workshop
- Report
- Recommendation of Best Practices for the Award

**In Summary:**

- 12 Workshops**
- 26 Countries**
- 170 Cases identified**
- 135 Cases evaluated**

## Available results

1. Established Network
2. Annual Report 2008
3. Documentation of identified problems and good practices at local, regional and national level
4. SDI Best practice data base
5. Data base of project stakeholders



Microsoft Access - [ESDI]

File Modifica Visualizza Inserisci Formato Record Strumenti Finestra

eSDI-NET plus

Country	NUTS Level	NUTS name
Italia	2	R. Liguria

SDI Name  
SITAR Sistema Informativo Territoriale Ambientale Regionale

Status	Year of Creation	Legitimacy
In operation	1998	Legge regionale

Thematic  Stato Services  Workforce 16  
Local Authorities

Mission  
Implementazione, manutenzione e divulgazione della base dati geografica territoriale e ambientale.

Objective  
Raccogliere, integrare, certificare, gestire e diffondere i dati geografici e ambientali

Legal Status  
Struttura interna all'ente

Funding mechanisms  
Regionale

Binding mechanisms  
convenzionali

eSDI-NET plus URL: <http://www.cartografia.regione.liguria.it>

Detailed sheet **Evaluation framework per la descrizione delle IDT sub-nazionali**

1 Carta d'identità della IDT sub-nazionale



## eSDI-NET+

Network for promotion of cross border dialogue and exchange of best practices on Spatial Data Infrastructures (SDI's) throughout Europe

**European SDI Best Practice Awards 2009 in Turin Register for the international conference now!**

**Identification and Analysis of SDI Best Practices - National Perspective**

**eSDI-Net+ at the GSDI11 World Conference**

This Website is part of the eSDI-NET+ project, co-funded by the Community programme **eContentplus**



**eSDI-Net+**  
**some background information**

Mauro Salvemini

**Results of the Sub-national SDI Analysis**

Francois Salge