

# eSDI-Net+ NLPG and NSG

11<sup>th</sup> Feb, 2009

Foresight Centre  
Liverpool



Steve Brandwood – Programme Manager  
(LGIH)

[Steven.brandwood@idea.gov.uk](mailto:Steven.brandwood@idea.gov.uk)



# LGIH in the context of the local government 'central bodies'

## Local Government Association

The LGA exists to promote better local government at a political level.

- It works with and for its member authorities to realise a shared vision.
- It aims to put local councils at the heart of the drive to improve public services and to work with government to ensure that the policy, legislative and financial context in which they operate, supports that objective.

## Improvement and Development Agency

IDeA stimulates and supports continual and self-sustaining improvement and development within local government

- It connects ideas and expertise; focusing on best practice and forward thinking
- It delivers a flexible range of tools and services
- It carries risk on behalf of local government by innovating and incubating new joined-up but locally-delivered initiatives

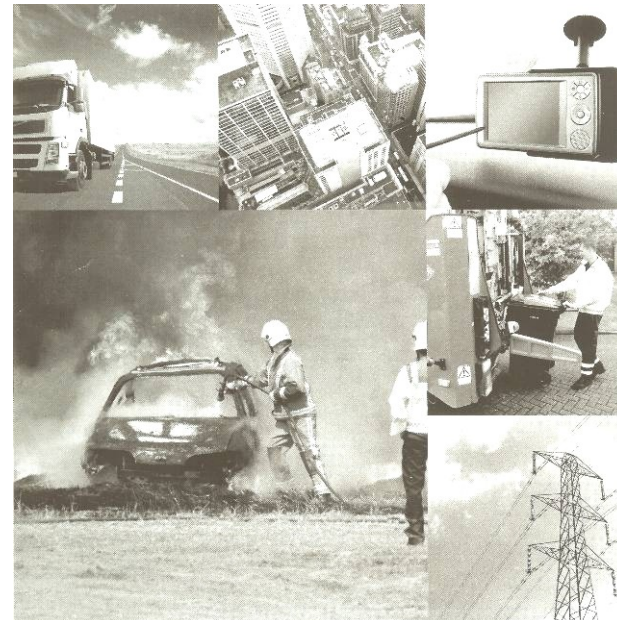
## Local Government Information House

LGIH works with local authorities to modernise their services.

- It is a wholly-owned subsidiary of the IDeA
- it works in partnership with the local authority community, developing national infrastructure projects that enable councils to deliver local services more effectively
- It is an intermediary between the public and the private sector, to negotiate with private companies on behalf of local authorities for shared infrastructure services

# What are the NLPG and NSG?

- The National Land and Property Gazetteer and National Street Gazetteer are local governments definitive address and street list to support the provision of citizen services.
- The NLPG and NSG are used by local government including, county and district authorities, unitary and metropolitan borough councils, police and fire authorities.
- Containing over 31 million address records and spatial features that require 'service delivery'
- 1.2 million street records



# What are the NLPG and NSG

Based on

The British standard for BS7666: 2006 – Parts 1 and 2

Compliant with ISO 19112

Administered by

Local Government Information House (LGIH)

LLPG and LSG Custodian Regional Chairs and convention groups

MSA Project Board



Coverage

NLPG: A compilation of all 376 LLPGs in England and Wales

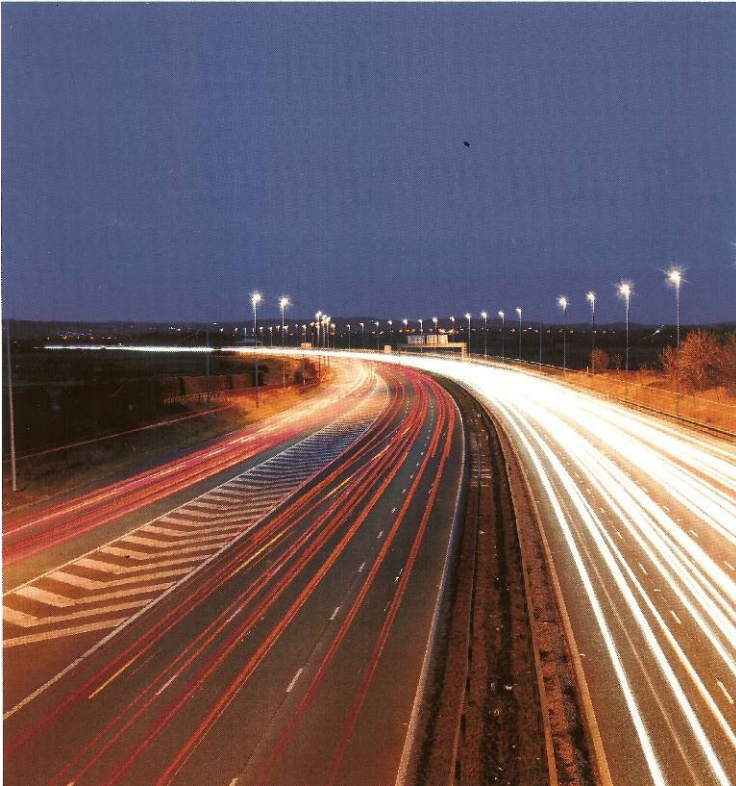
NSG: A compilation of all 172 LSGs in England and Wales

Identical authority based approach in Scotland – similar in NI

Created

Under contract with local government (MSA)

# What do they contain?

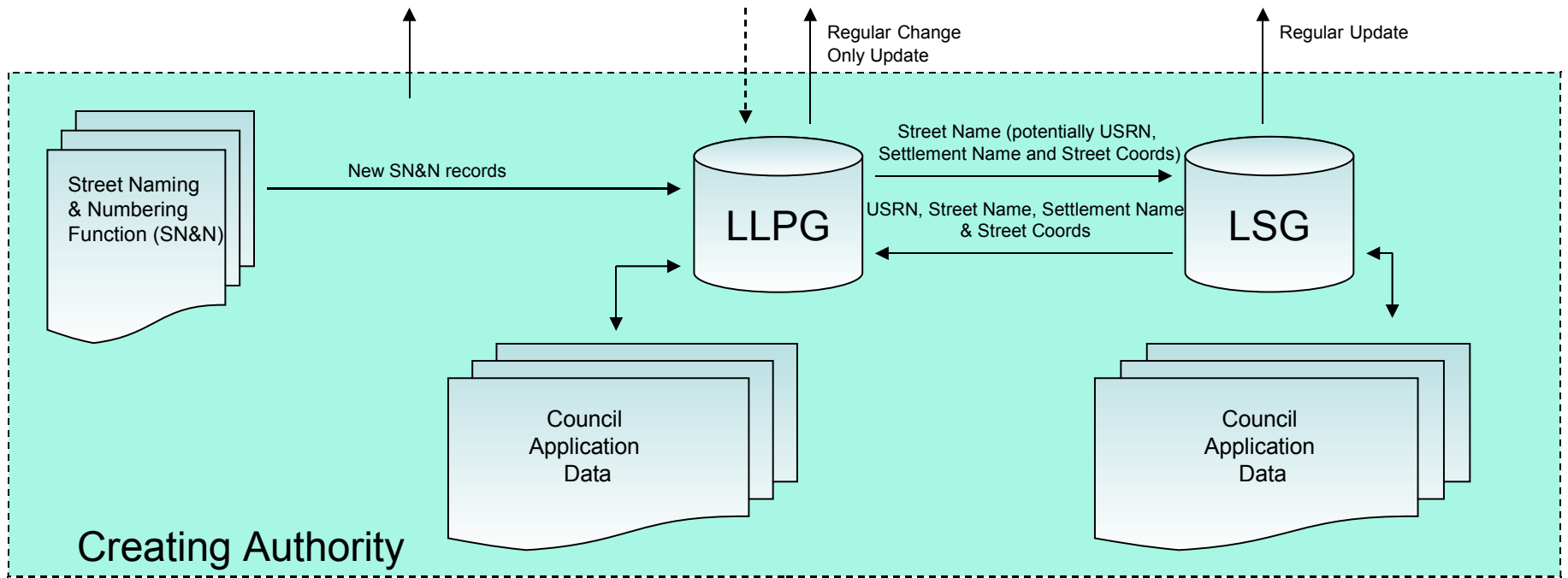


How are they referenced?

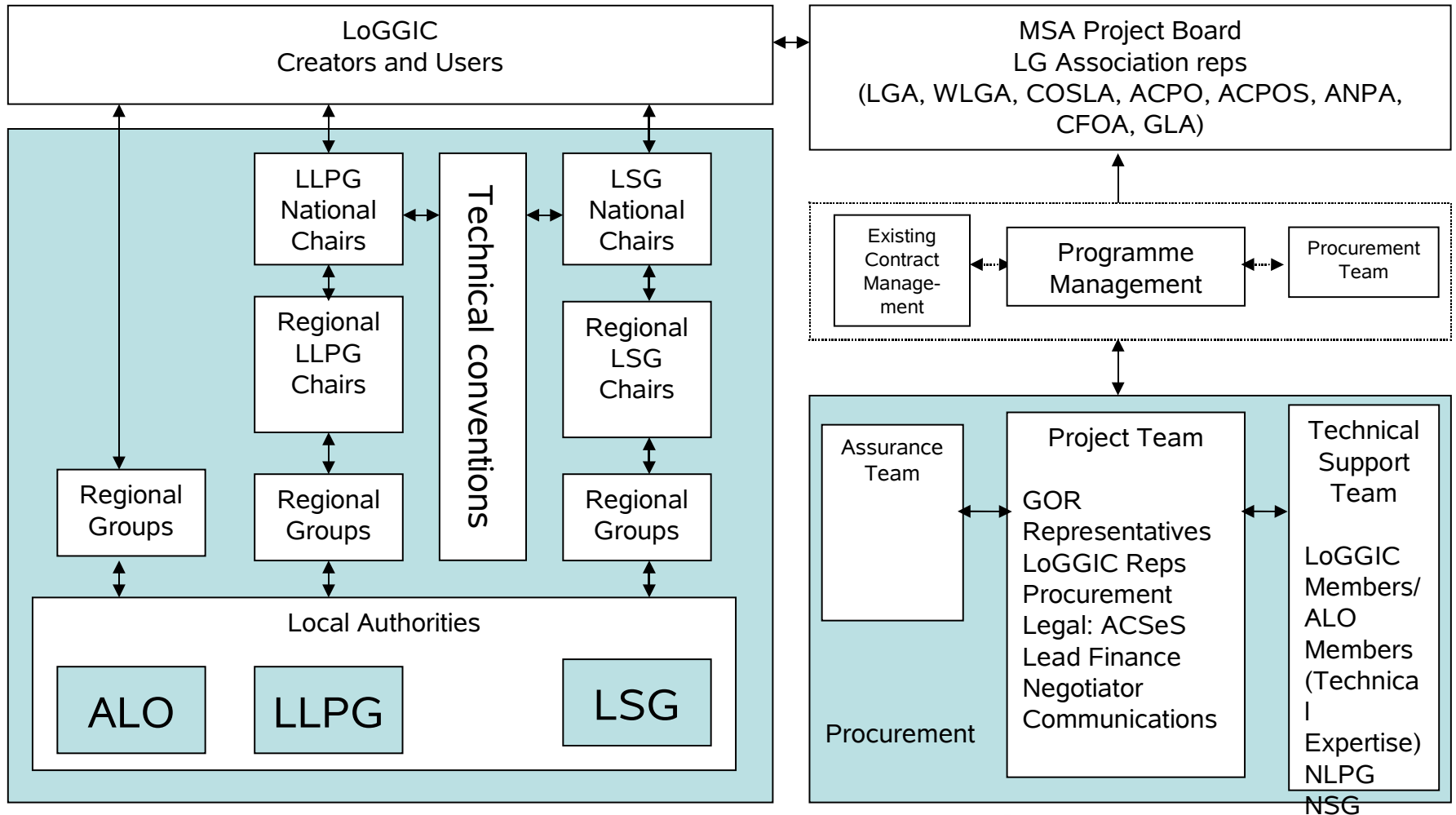
- All BLPUs are referenced by a unique property referenced number (UPRN)
- All BLPUs contain at least one descriptive identifier (address or LPI)
- All BLPUs contain a grid coordinate
- All postal addresses contain a postcode and post town
  
- All streets contain a Unique Street Reference Number (USRN)
- Elementary Street Units (ESUs)
- All streets contain grid coordinates (level1) and full geometry (level2)

# What do the national gazetteers look like?

Outward customer facing services



# Programme Governance

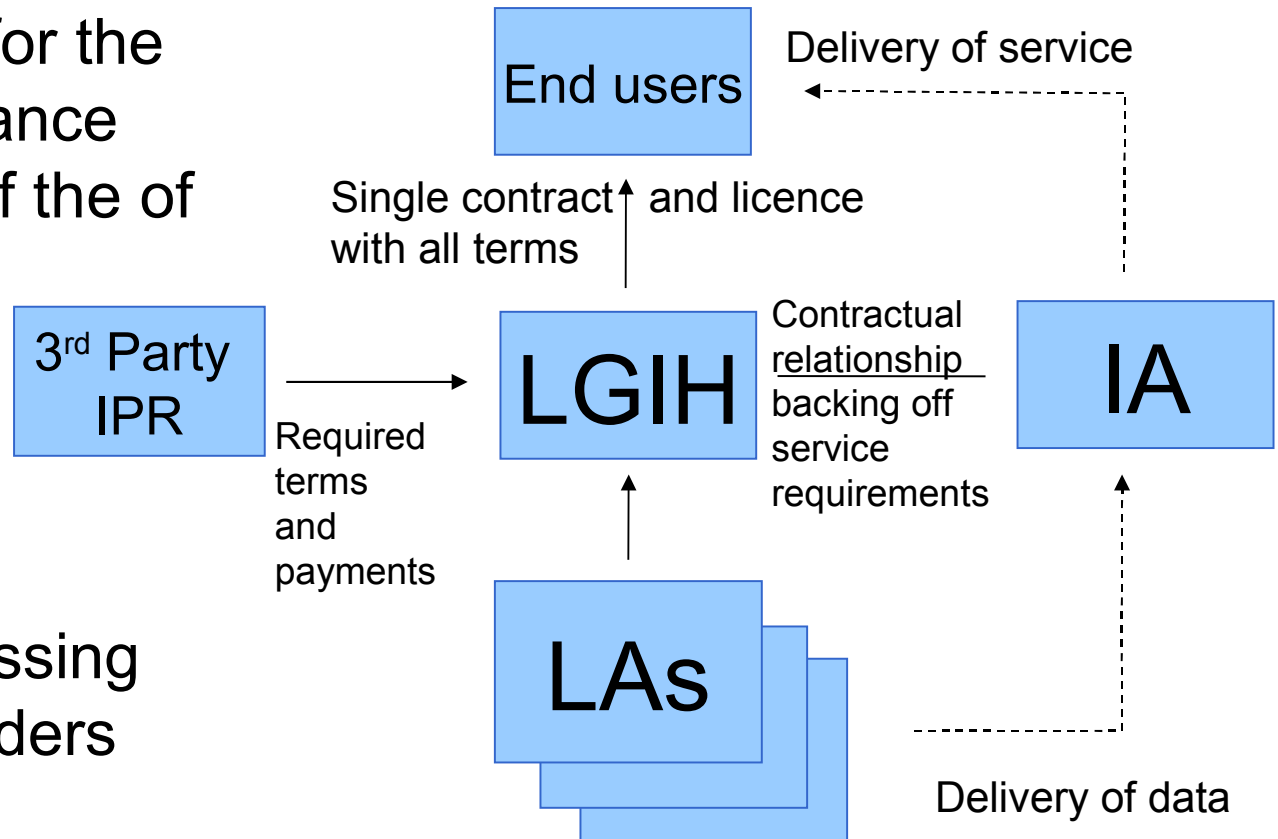


# LGIH and end users

LGIH acts a contractual and licence 'hub' for the creation, maintenance and onward use of the of the NLPG

It manages 4 relationships:

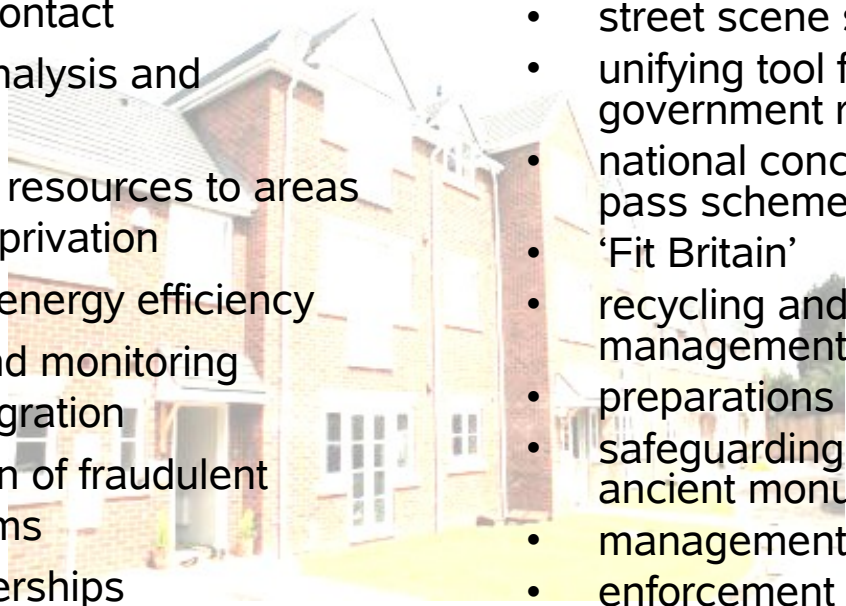
- Local Authorities
- Intelligent Addressing
- 3<sup>rd</sup> Party IPR holders
- End users



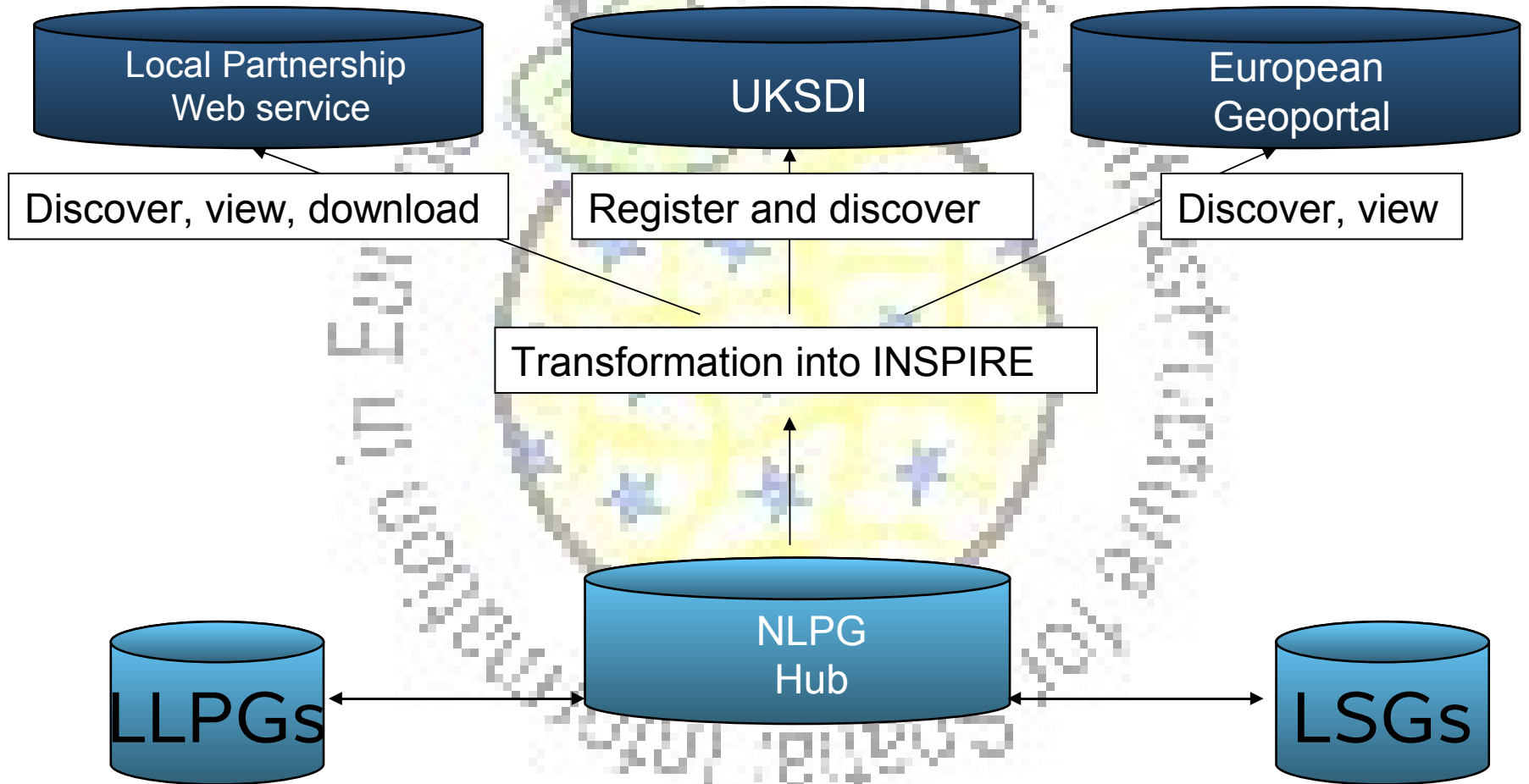


# Local usage

Winners from our gazetteer 'Oscars' are really showing benefits through integration of data based around a corporate address list....

- 
- avoidable contact
  - flood risk analysis and prevention
  - targeting of resources to areas of social deprivation
  - promoting energy efficiency
  - mapping and monitoring borough migration
  - investigation of fraudulent benefit claims
  - CRM partnerships
  - crime and disorder reduction
  - street scene services
  - unifying tool for local government reorganization
  - national concessionary bus pass schemes
  - 'Fit Britain'
  - recycling and waste management
  - preparations for FiReControl
  - safeguarding wildlife and ancient monuments
  - management of street works
  - enforcement of the Environmental protection Act

# NLPG INSPIRE compliance



# Thank you for listening



Steve Brandwood  
Programme Manager (LGIH)  
[steven.brandwood@idea.gov.uk](mailto:steven.brandwood@idea.gov.uk)

[www.idea.gov.uk](http://www.idea.gov.uk)

---

improvement and development  
agency for local government